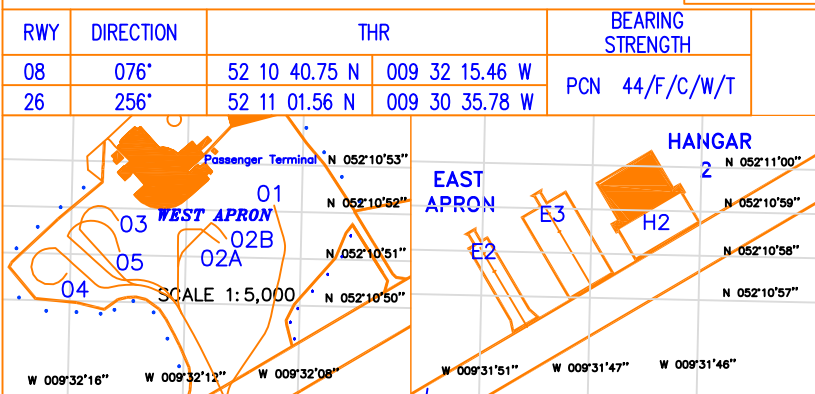


AERODROME CHART - ICAO 52 10 51.16 N AERODROME ELEV 112FT
009 31 25.62 W APRON ELEV 78FT

TWR 123.325
GND 121.600
ATIS 118.025

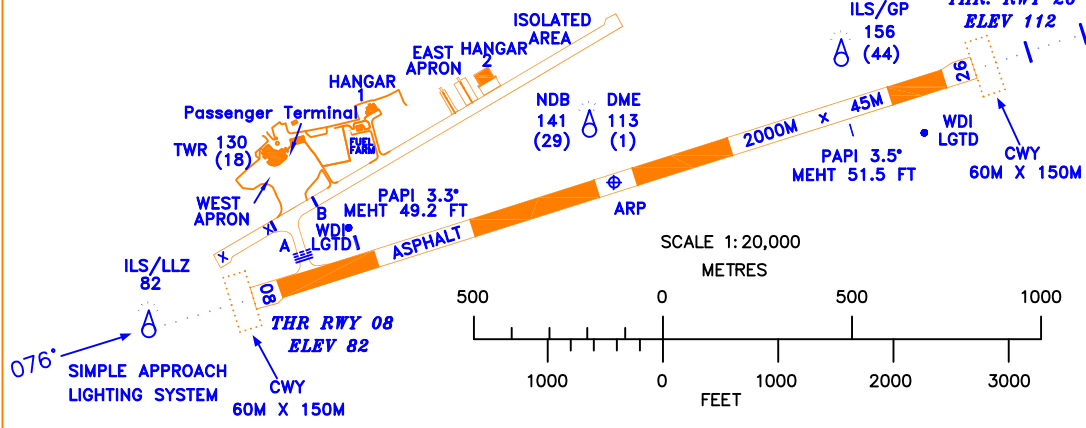
CONSULT NOTAM
FOR LATEST
INFORMATION

KERRY AIRPORT/ IRELAND



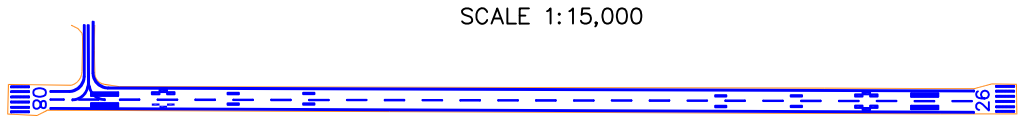
LEGEND	
AIRCRAFT STAND	1
RUNWAY HOLDING POSITION MARKING	≡≡≡≡
DISUSED PAVEMENT	X X X

BEARINGS ARE MAGNETIC.
LINEAR DIMENSIONS IN METRES.
ELEVATIONS IN FEET AMSL
HEIGHTS IN FEET ABOVE AERODROME
ELEVATION SHOWN IN BRACKETS.

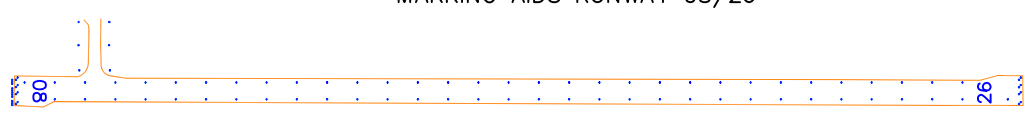


PRECISION APPROACH CAT I LIGHTING SYSTEM
256°
VAR 4° W 2021
ANNUAL RATE OF CHANGE - 11' W

AMENDMENT RECORD		
NO.	DATE	ENTERED BY



MARKING AIDS RUNWAY 08/26



LIGHTING AIDS RUNWAY 08/26

Stand	Latitude	Longitude	Max Wingspan	Max Length	Conditions
WEST APRON					
1	52 10 52.14 N	009 32 09.00 W	38.06	47.33	Self Manoeuvring.
2A	52 10 51.32 N	009 32 10.91 W	28.88	36.40	Self Manoeuvring Stand 2B Vacant
2B	52 10 51.41 N	009 32 10.65 W	35.79	44.50	Self Manoeuvring Stand 2A Vacant
3	52 10 51.76 N	009 32 14.46 W	29.00	25.25	Self Manoeuvring Stand 5 Vacant
4	52 10 50.57 N	009 32 16.22 W	29.00	25.25	Self Manoeuvring Stand 5 Vacant
5	52 10 51.09 N	009 32 14.38 W	34.15	44.50	Self Manoeuvring Stands 3 and 4 Vacant
EAST APRON					
E2	52 10 52.14 N	009 32 09.00 W	36.00	45.00	Self Manoeuvring/Push back for departure.
E3	52 10 51.32 N	009 32 10.91 W	36.00	45.00	Self Manoeuvring/Push back for departure.

- NOTE 1: TAXIWAY A, EAST APRON : PCN 44/F/C/W/T.
- NOTE 2: WEST APRON : PCN 44/F/C/W/U.
- NOTE 3: TAXIWAY A : 23M WIDE.
- NOTE 4: APRON SURFACE : CONCRETE AND ASPHALT.
- NOTE 5: FORWARD SCATTER VISIBILITY METER AVAILABLE ON APPROACH 26 and 08.
- NOTE 6: TAXI LANE B : WING SPAN 36M.

CHANGES: GENERAL REVISION